



INTELLIGENT
LIFE'S
QUALITY



AC CHARGING STATION

WallBox 100 series



WallBox 100 series charging stations are designed to be installed indoors or outdoors mounted on the wall. The main usage scenarios are underground parking and private use.

Depending on the model charging stations can be accessed freely, with a mechanical key or an RFID card and features a plug locking mechanism. 1 charging station provides 1 charging point with 3.6kW, 7.4kW, 11kW or 22kW nominal power.

Charging station can be equipped with a 4-5 meter long Type 1 or Type 2 charging cable.

AUTHORIZATION



COMMUNICATION & PROTOCOL



CONNECTIVITY



HUMAN MACHINE INTERFACE



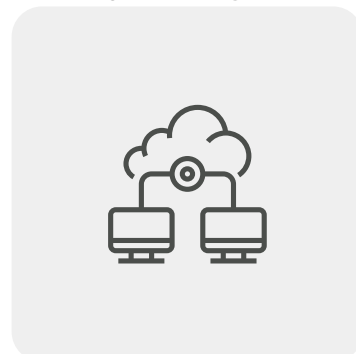
SCALABILITY



LOAD BALANCING



REMOTE MANAGEMENT



TECHNICAL DATA

MODELS

GENERAL DATA	HOME MFC 101	HOME+ MFC 102	INTELLIGENT MFC 103	INTELLIGENT+ MFC 104	INTELLIGENT MODULAR MFC 100M
Human Machine Interface					
Display	-	-	-	7" TFT LCD w/ buttons	-
Interface languages	-	-	-	per request	-
Authorization	free access / mechanical key			RFID IEC14443A/B, NFC	
Scalability	-	-		primary	secondary
External communication	-	Ethernet & WiFi		3G & Ethernet	RS485
Communication protocol	-	-		OCPP 1.6S	via primary
Management system	-	WEB		ETAGO management	
Energy meter	optional (Active energy, Class 1)			MID certified (for electricity cost reimbursement)	
Charging mode				Mode 3	
Socket type				Type2 IEC62196	
Communication with EV				according to IEC61851	
Cable locking during the charging session				included	
Charging light beacon				RGB light indicator	
Load balancing support	-			yes	
OPTIONAL					
Socket locker	-	x	x	x	x
Socket shutter	-	x	x	x	x
Type 1 / Type 2 charging cable*	x	x	x	x	x
Plug locking mechanism	x	x	x	x	x
Charging cable length				4m or 5m (Type 1 or Type 2 charging cable options)	
Charging cable type				Spiral or flat (Type 1 or Type 2 charging cable option)	
Charging cable holder				Spiral or flat (Type 1 or Type 2 charging cable option)	

ELECTRICAL CONNECTION

AC NOMINAL INPUT		
Connection type	1 phase + N + P	3 phase + N + PE
Voltage	230VAC +/- 10%	400VAC +/- 10%
Current		16A or 32A
Nominal power	3.6kW or 7.4kW	11kW or 22kW
Frequency		50 or 60 Hz
AC NOMINAL OUTPUT		
Voltage	230V +/- 10%	400V +/- 10%
Current		16A or 32A
Nominal power	3.6kW or 7.4kW	11kW or 22kW
Over current protection (Curve C)**		20A or 40A
RCD***		30 mA (Type A) + 6mA DC
Sockets		1
CONSTRUCTION		
Place of installation		indoor / outdoor
Type of installation****		on the wall / pole / stand
Body protection degree		IP54
Operating temperature		-25C to +50C
Storage temperature		-40C to +60C
Relative humidity		5% to 95%
Body material		plastic, glass
Dimension W x H x D		33 x 49 x 14 cm
Weight		8 kg

* Type 1 charging cable only for 3,6kW or 7,4kW

** over current MCB (Curve C) could be installed in the charging station or in case it isn't installed in the charging station, it must be installed in the distribution board (breaker panel)

*** RCD 30 mA (Type A) + 6mA DC, could be installed in the charging station or in case it isn't installed in the charging station, it must be installed in the distribution board (breaker panel)

**** additional accessories needed for mounting on pole or stand

